

JARGY CO., LTD.

Test Report

Model : CBL-ED302MBCS-10m

Ver : 1.0

Date : 2015/11/19

Camera Brand Name : IDS

Test Platform

Type	PC		
Model	ASUS Z97-K/USB3.1		
OS	Windows 7 Home Premium 64Bit		
CPU	Intel Core i3-4160		
HDD	SATA III 1TB		
RAM	DDR3 4GB		
USB 3.0	PCH 6 Ports(Intel Z97 Native)		

Tested Camera : UI-3370CP-C-HQ

Tested time : 73h



uEye Cockpit - UI337xCP-C ID: 1 - 序號: 4102781785

檔案 查看 uEye 檔案資料 幫助(H)

主機性能

幀時序 (僅DIB模式)	
CPU負載	55 %
相機FPS	80.9 fps
CPU限制下的最高幀率	116.1 fps
幀計算時間	8.6 ms
幀延遲時間	12.4 ms

時序比率 0.70

設定OK 設定臨界

使用OpenMP 預設

目前設定	
影像尺寸	2048 x 2048
自動曝光	關閉
自動白平衡	開啟
自動增益	關閉
邊緣增強	關閉
軟體 LUT	關閉
軟體Gamma	關閉
忽略幀數	
自動曝光/增益	4
自動白平衡	4

取像失敗	
API 無目的地記憶體:	0
API 轉換失?:	0
API 影像鎖定:	0
驅動緩衝區溢滿:	0
裝置驅動未就緒:	0
USB 傳輸錯誤:	0
裝置逾時:	0
裝置緩衝區溢位:	0
裝置遺失影像:	0
Device frame capture failed:	0
總失敗:	0

重設錯誤

Device temperature: 65.2° C (149.3° F) 關閉

頻寬	
最大介面頻寬	380.0 MB/s
相機頻寬高峰	399.0 MB/s

設定OK 設定臨界

相機緩衝區資訊	
相機影像緩衝區	0
已使用	0
0%	100%
重寄封包	0

BGRA8 (2048 x 2048) 幀數: 18334762 顯示: 8333741 失敗: 0 Recon: 0 傳輸: 確認 FPS: 80.91

JARGY CO., LTD.

Test Report

Model : CBL-ED302MBCSWB-15m

Ver : 1.0

Date : 2015/11/23

Camera Brand Name : IDS

Test Platform

Type	PC		
Model	ASUS Z97-K/USB3.1		
OS	Windows 7 Home Premium 64Bit		
CPU	Intel Core i3-4160		
HDD	SATA III 1TB		
RAM	DDR3 4GB		
USB 3.0	PCH 6 Ports(Intel Z97 Native)		

Tested Camera : UI-3370CP-C-HQ

Tested time : 86h



uEye Cockpit UI337xCP-C ID: 1 - 序號: 4102781785

檔案 查看 uEye 檔案資料 幫助(H)

主機性能

幀時序 (僅DIB模式)	
CPU負載	60 %
相機FPS	92.4 fps
CPU限制下的最高幀率	139.4 fps
幀計算時間	7.2 ms
幀延遲時間	10.8 ms

時序比率: 0.66

設定OK 設定臨界

使用OpenMP 預設

目前設定	
影像尺寸	2048 x 1792
自動曝光	關閉
自動白平衡	開啟
自動增益	關閉
邊緣增強	關閉
軟體 LUT	關閉
軟體Gamma	關閉
忽略幀數	
自動曝光/增益	4
自動白平衡	4

取像失敗	
API 無目的地記憶體:	0
API 轉換失?::	0
API 影像鎖定:	0
驅動緩衝區溢滿:	0
裝置驅動未就緒:	0
USB 傳輸錯誤:	0
裝置逾時:	0
裝置緩衝區溢位:	0
裝置遺失影像:	0
Device frame capture failed:	0
總失敗:	0

重設錯誤

頻寬	
最大介面頻寬	380.0 MB/s
相機頻寬高峰	399.0 MB/s

設定OK 設定臨界

相機緩衝區資訊	
相機影像緩衝區	0
已使用	0
0%	100%
重寄封包	0

關閉

Device temperature: 63.9° C (147.0° F)

BGRA8 (2048 x 1792) 幀數: 28728627 顯示: 9969871 失敗: 0 Recon: 0 傳輸: 確認 FPS: 92.39

JARGY CO., LTD.

Test Report

Model : CBL-ED302MBCSWB-25m

Ver : 1.0

Date : 2015/12/14

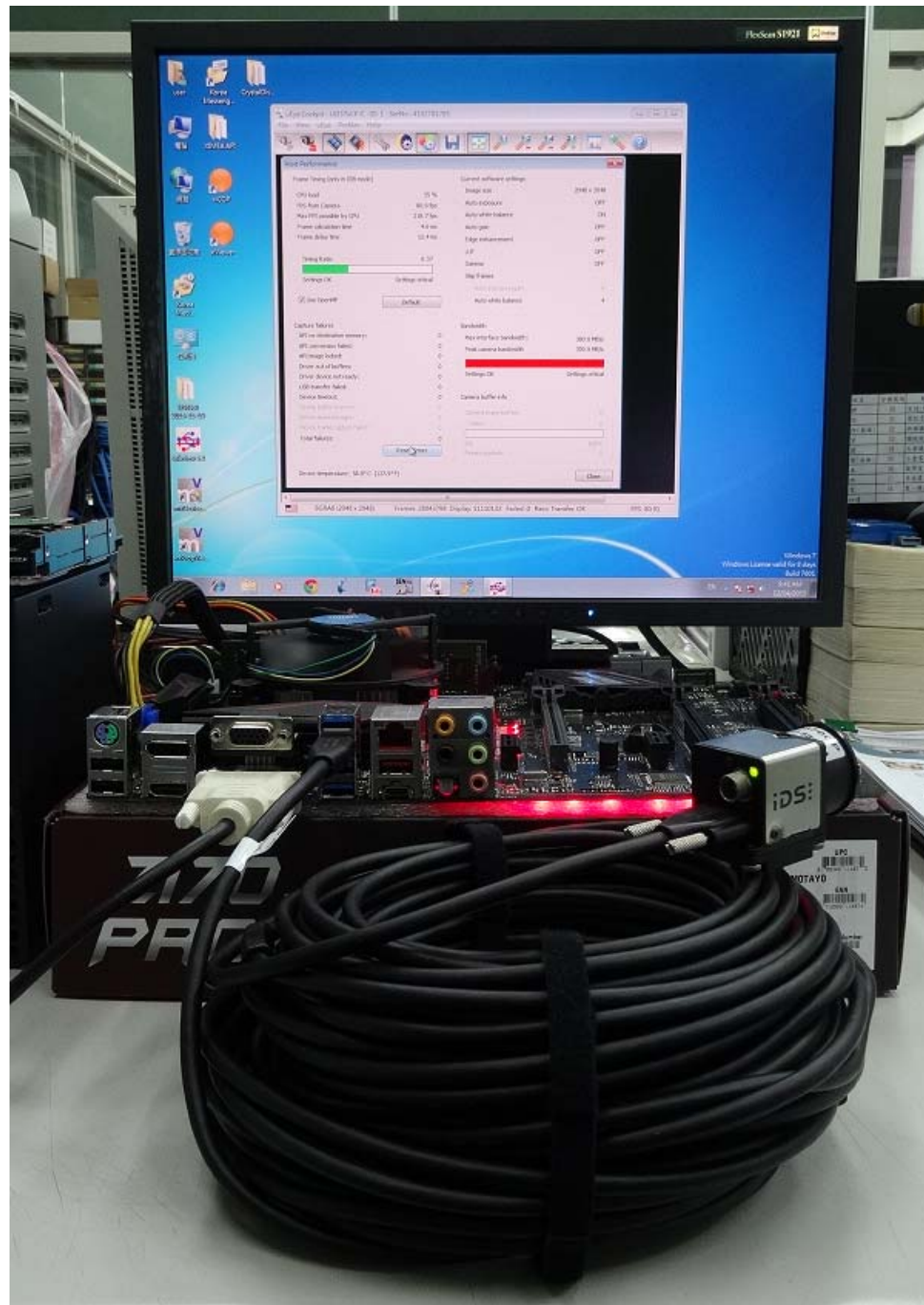
Camera Brand Name : IDS

Test Platform

Type	PC		
Model	ASUS Z170 PRO GAMING		
OS	Windows 7 Home Premium 64Bit		
CPU	Intel Core i5-6400		
HDD	SATA III 1TB		
RAM	DDR4 4GB		
USB 3.0	PCH 6 Ports(Intel Z170 Native)		

Tested Camera : UI-3370CP-C-HQ

Tested time : 96h



uEye Cockpit UI337xCP-C ID: 1 - SerNo.: 4102781785

File View uEye Profiles Help

Host Performance

Frame Timing (only in DIB mode)

CPU load	37 %
FPS from Camera	80.9 fps
Max FPS possible by CPU	216.5 fps
Frame calculation time	4.6 ms
Frame delay time	12.4 ms

Timing Ratio 0.37

Settings OK Settings critical

Use OpenMP Default

Current software settings

Image size	2048 x 2048
Auto exposure	OFF
Auto white balance	ON
Auto gain	OFF
Edge enhancement	OFF
LUT	OFF
Gamma	OFF
Skip frames	
Auto exposure/gain	4
Auto white balance	4

Capture failures

API no destination memory:	0
API conversion failed:	0
API image locked:	0
Driver out of buffers:	0
Driver device not ready:	0
USB transfer failed:	0
Device timeout:	0
Device buffer overrun:	0
Device missed images:	0
Device frame capture failed:	0
Total failures:	0

Reset Errors

Bandwidth

Max interface bandwidth:	380.0 MB/s
Peak camera bandwidth	399.0 MB/s

Settings OK Settings critical

Camera buffer info

Camera image buffers	0
Used	0
0%	100%
Resend packets	0

Device temperature: 58.8° C (137.9° F) Close

BGRA8 (2048 x 2048) Frames: 28046423 Display: 11111168 Failed: 0 Recc Transfer: OK FPS: 80.91

JARGY CO., LTD.

Test Report

Model : CBL-ED302MBCSWB-30m

Ver : 1.0

Date : 2015/12/17

Camera Brand Name : IDS

Test Platform

Type	PC		
Model	ASUS Z170 PRO GAMING		
OS	Windows 7 Home Premium 64Bit		
CPU	Intel Core i5-6400		
HDD	SATA III 1TB		
RAM	DDR4 4GB		
USB 3.0	PCH 6 Ports(Intel Z170 Native)		

Tested Camera : UI-3370CP-C-HQ

Tested time : 72h

uEye Cockpit UI337xCP-C ID: 1 - SerNo.: 4102781785

File View uEye Profiles Help

Host Performance

Frame Timing (only in DIB mode)

CPU load	34 %
FPS from Camera	80.9 fps
Max FPS possible by CPU	218.6 fps
Frame calculation time	4.6 ms
Frame delay time	12.4 ms

Timing Ratio 0.37

Settings OK Settings critical

Use OpenMP Default

Current software settings

Image size	2048 x 2048
Auto exposure	OFF
Auto white balance	ON
Auto gain	OFF
Edge enhancement	OFF
LUT	OFF
Gamma	OFF
Skip frames	
Auto exposure/gain	4
Auto white balance	4

Capture failures

API no destination memory:	0
API conversion failed:	0
API image locked:	0
Driver out of buffers:	0
Driver device not ready:	0
USB transfer failed:	0
Device timeout:	0
Device buffer overrun:	0
Device missed images:	0
Device frame capture failed:	0
Total failures:	0

Reset Errors

Bandwidth

Max interface bandwidth:	380.0 MB/s
Peak camera bandwidth	399.0 MB/s

Settings OK Settings critical

Camera buffer info

Camera image buffers	0
Used	0
0%	100%
Resend packets	0

Device temperature: 56.1° C (133.0° F)

Close

BGRA8 (2048 x 2048) Frames: 20984131 Display: 8313244 Failed: 0 Recor Transfer: OK FPS: 80.91